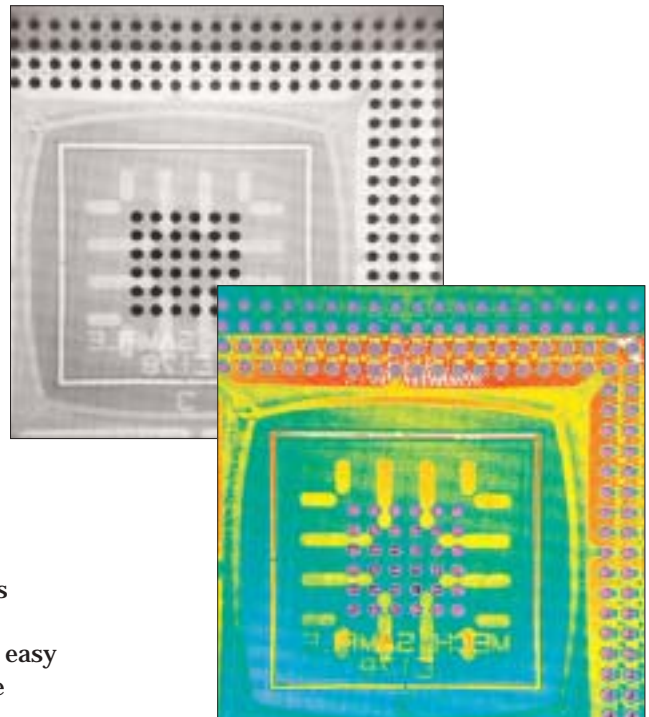


Affordable image processing software provides capture, enhancement, and storage of images during x-ray inspection of BGA components and PCB boards.

GTI-1000 Image Processing Software is designed specifically for those using x-ray inspection to monitor the quality of assembled components, in both laboratory and production environments. The easy-to-use software is pre-loaded onto a high performance PC.

The GTI-1000 supports freeze or live viewing. Frame averaging is selectable at 2, 4, 8, 16 or 32 frames. Contrast can be adjusted manually or automatically. Enhanced pseudocolor images allow easy identification of specific components or flaws. All images can be saved, stored, transmitted or printed.



The GTI-1000 features the familiar Windows® based graphical user interface - no training necessary! The software uses Intel's® 3D Extreme Graphics integrated chip-set to run rapidly and efficiently.

Specifications:

Software:

Frame averaging from 2-32 frames
Freeze/live viewing
Manual or automatic contrast adjust
Pseudocolor enhancement

Hardware/operating system:

PC computer w/monitor
Windows XP® operating system
Intel® 3D Extreme Graphics Chipset
Mutech MV-510 image capture board



www.GlenbrookTech.com

11 Emery Avenue, Randolph, NJ 07869 USA
973.361.8866 Fax: 973.361.9286