



Powerful image-processing software and hardware provides accurate measurement and analysis tools for rapid and reliable X-ray inspection of BGA components and PCB boards.

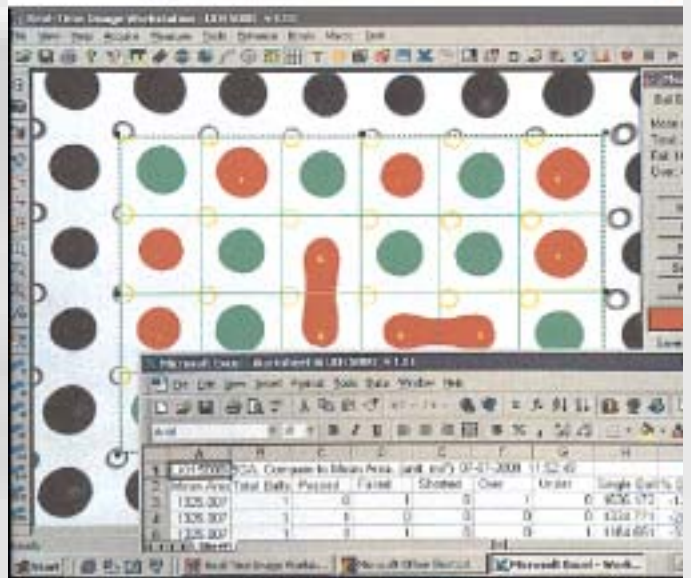
GTI-5000's familiar Windows™ based graphical user interface provides a variety of imaging tools to accurately measure and analyze BGAs and other advanced packages. A number of image adjustment controls provide the best quality image for analysis.



GTI-5000 Image Processing Software is designed specifically for those using X-ray Inspection to monitor the quality of assembled components in both laboratory and production environments. The easy-to-use software runs on a high-performance PC and facilitates fast and accurate measurement and testing routines used when inspecting BGAs and other advanced packages.



The fully networkable software can accurately determine Percent Void, Drill Offset, Wire Sweep, Linear Distance, Ball Diameter and more. Imaging tools allow users to control contrast, apply digital filters, pan and zoom images, create split screen views, generate text labels and callouts as well as save image data to an MS Excel™ spreadsheet. The software also features a complete on-screen help menu.



The high performance Intel™ PIII PC runs on a Windows 2000™ or Windows NT™ platform and has imaging hardware to support RS-170 video. It is equipped with 128MB/133MHz SDRAM, a 32MB AGP graphics card and a 20GB hard drive and 250MB Zip drive, a 12X CD-ROM and a floppy drive.



www.GlenbrookTech.com

**11 Emery Avenue, Randolph, NJ 07869 USA
973.361.8866 Fax: 973.361.9286**